

Specification

Std series-D3120-24V-8mm



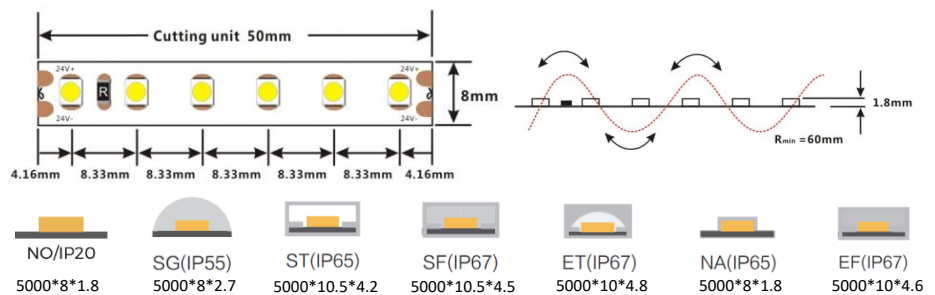
General description

- ※Self-encapsulated design offers six optional 2300-6000K white lights and four optional R/G/B/Y colorful lights
- ※High quality FPC, high thermal 3M adhesive
- ※Ta: -25~40° C; Tc: 75° C (max)



Dimensions

- Max.length:** 5000mm
- Cutting unit:** 50mm/6leds
- LED pitch:** 8.33mm
- Min. bend diameter:** Φ 60mm
- Mounting:** 3M tape
- IP:** IP20/55/65/67

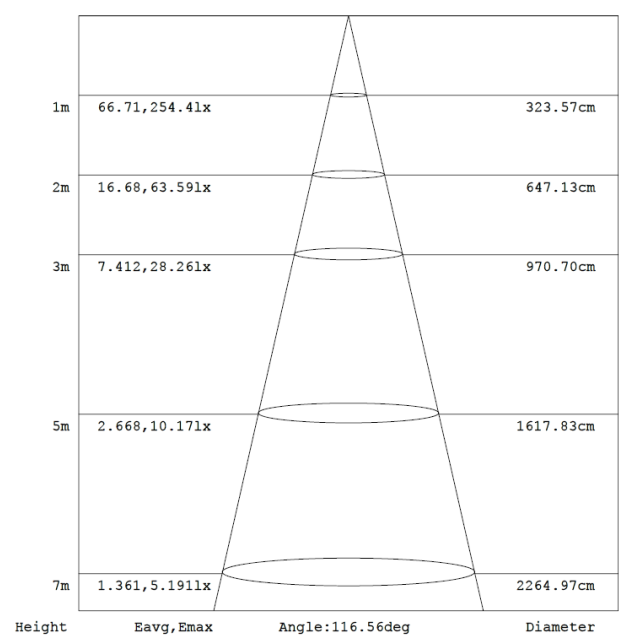
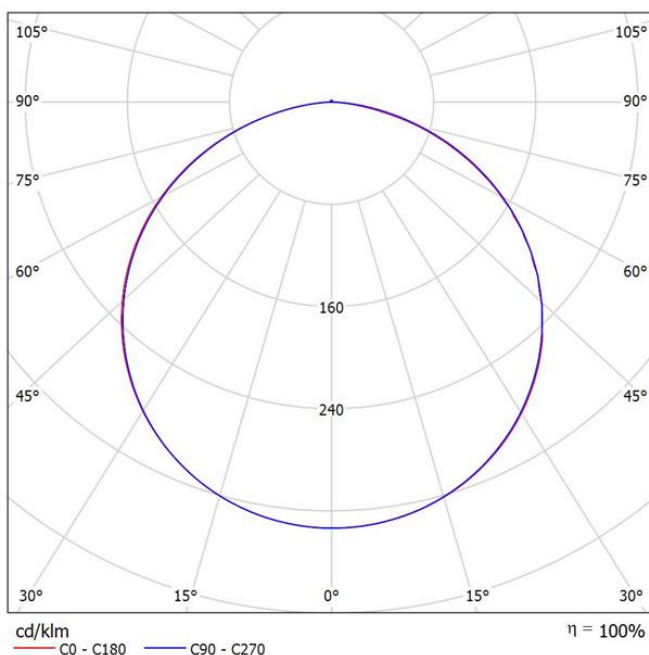


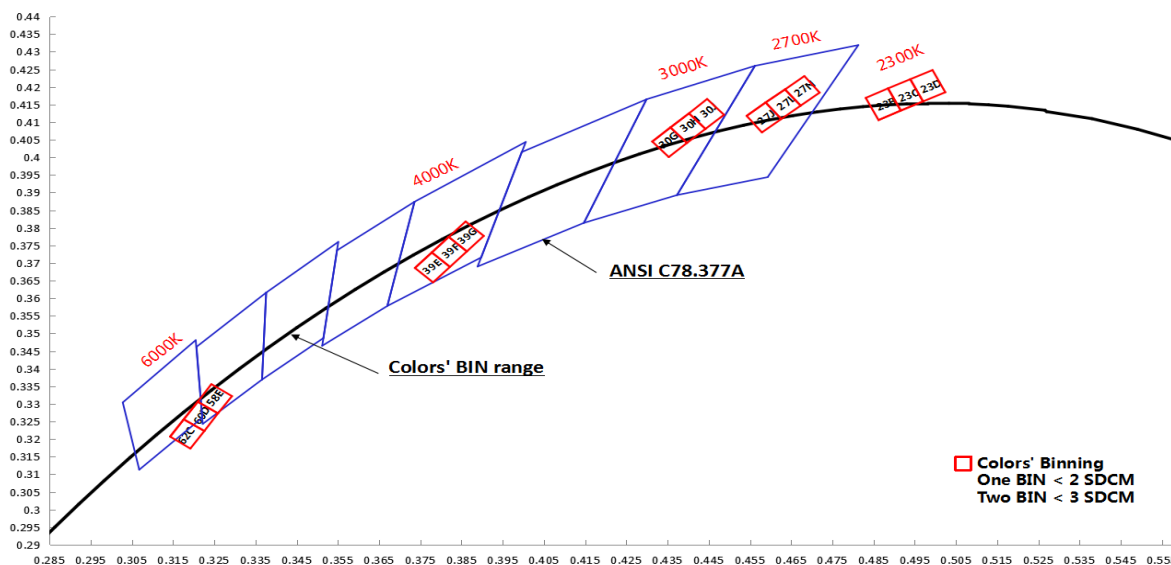
Electronic & output data

- Input voltage:** 24VDC
- Rated current:** 0.35A(1meter) /1.53A(5meter)
- Typical Power:** 8.4W(1meter) /36.72W(5meter)
- Power range:** 7.7~9.1W
- Max.power:** 9.6W (I_f=20mA)
- CRI:** 80
- On-off times:** 10000 (test times)

Color	LW	SW	WW	NW	W	R/G/B/Y
CCT	2300K	2700K	3000K	4000K	6000K	/
Lumen	655lm	701lm	739lm	762lm	739lm	/
Lm/W	78	83	88	91	88	/
Energy efficiency class	A+	A+	A+	A+	A+	/

1.The tolerance of output data can be vary up to 10%
 2.the output data tested according to IES LM-79-08
 3.the output data is based on IP20/1meter
 4.IP protection process leads changes to size, CCT and luminous flux



BIN

Accessories Information

Type	Name	Picture	Code	Color	protection technique	Remark
wire cable with connector	red and black cable		94-01-00-0001 (head) /94-01-00-0002 (tail)	red/black	NO/ST/SF/NA/SG	20AWG L=120mm
	Two core SM-male wire		94-01-00-0012	red/black	NO	20AWG L=150mm
	Two core SM-female wire		94-01-00-0013	red/black	NO	20AWG L=150mm
	Two core DC-male wire		94-01-00-0020	black	NO/SG	20AWG L=150mm
	Two core DC-female wire		94-01-00-0021	black	NO/SG	20AWG L=150mm
	Two core PVC-male wire		94-01-00-0024	white	ST/SF/NA/SG	20AWG L=150mm
	Two core PVC-female wire		94-01-00-0025	white	ST/SF/NA/SG	20AWG L=150mm
	Two core Lucid wire		94-01-00-0026	transparent	ST/SF/NA/SG	20AWG L=200mm
	Two core Lucid-male wire		94-01-00-0027	transparent	ST/SF/NA/SG	20AWG L=150mm
	Two core Lucid-female wire		94-01-00-0028	transparent	ST/SF/NA/SG	20AWG L=150mm
	single pin,"-"shape wire connector		94-01-00-0043	black	-	Wire Diamerer< 2.1mm
	single pin,"T"shape wire connector		94-01-00-0044	black	-	Wire Diamerer< 2.1mm
	double pin,"-"shape wire connector		94-01-00-0045	black	-	Wire Diamerer< 2.1mm
	double pin,"T"shape wire connector		94-01-00-0046	black	-	Wire Diamerer< 2.1mm

	Split-box		94-01-00-0047	-	-	-
	Quick wiring		94-01-00-0048	-	-	-
connector	Solder free terminal		94-42-620800001	transparent	NO	-
	Solder free terminal		94-42-620800002	transparent	NO	-
	Solder free terminal		94-03-00-0044	transparent	SG	-
	Solder free terminal		94-03-00-0048	transparent	SG	-
	Solder free terminal		94-03-00-0027	white	ET	-
	Solder free terminal		94-03-00-0028	white	ET	-
	Solder free terminal		94-03-00-0029	white	ET	-
Fixed parts	8mm Fixed clasp		94-02-00-0002	transparent	ST/SF/SG	-
	8mm Tube clamps		94-02-00-0017	transparent	NO	-
	8mm Tube clamps		94-02-00-0015	transparent	SG	-
	8mm No silicone hole plug		94-02-00-0008	transparent	ST/SF	-
	8mm Silicone single hole plug		94-02-00-0011	transparent	ST/SF	-
	Stopper glue		94-16-03010001	-	ST/SF	-

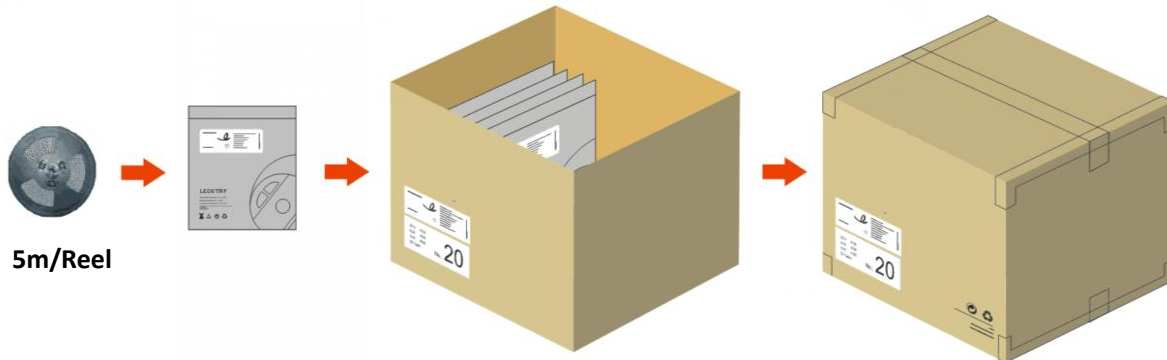
Order Code Formats

1:Category		2:LED		3:LED/m		4:Voltage		5:FPC Width		6:IP Process		7:CRI		8:CCT	
D	-	3	3528	120	120 LED	12	12V	08	8mm	NO	NO	8	>80	LW	2300K
										SG	SILICONE GLUE			SW	2700K
										ST	SILICONE TUBE			WW	3000K
										SF	SILICONE FILLED			NW	4000K
										ET	Extrusion Tube			W	6000K
										EF	Extrusion FILLED				
										NA	NANO				
9:Silk Printing		10:Entery cable		11:Wire type		12:Wire length		13:Tape type		14:Label Type		15: Strip Length			
C	COLORS	S	Single	A	red and black cable	012	12cm	W	White 3M	C	COLORS	0050	0.5m		
S	customized	D	doubel	B	SM-male wire	020	20cm	Y	Yellow 3M	S	customized	0100	1m		
N	Neutral	X	Nothing	C	SM-female wire	050	50cm	R	Red tape			0200	2m		
				X	Nothing	100	100cm	X	Nothing			0500	5m		
						000	Nothing					5000	50m		

D31202408NO-8NWCD A012WC0500

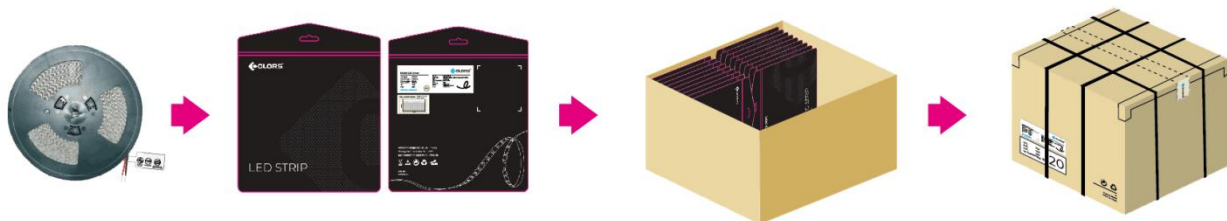
Packing

1. Non- brand of NO(IP20)/SG(IP55)/ST(IP65)/SF(IP67)/ET(IP67)/EF(IP67)/NA(IP65).



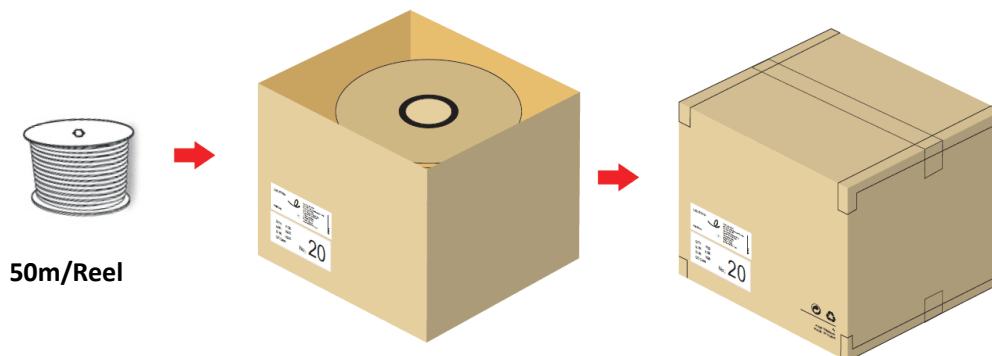
5m/Reel

2. Brand of NO(IP20)/SG(IP55)/ST(IP65)/SF(IP67)/ET(IP67)/EF(IP67)/NA(IP65).



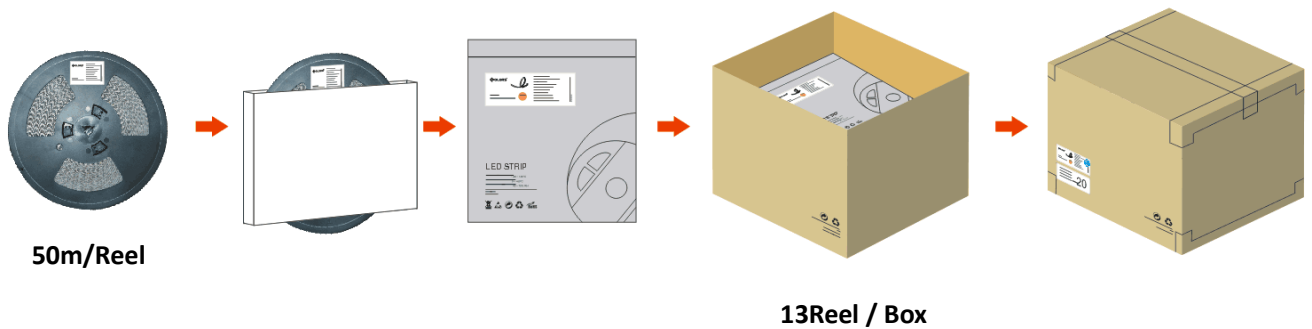
5m/Reel

3. Engineering packaging of ET(IP67). (free-soldering end caps with 40 cover per box could be ordered separately if needed)



50m/Reel

4. Engineering packaging of NO(IP20).



Disclaimer

- ※Please drive the led strip with 24VDC isolated power, and the ripple of the constant voltage source should be less than 5%.
- ※ Please do not bend the strip into an arc with a diameter less than 60mm to ensure the longevity and reliability.
- ※Do not fold it in case any damage of LED beads.
- ※Do not pull the power wire hard to ensure the longevity. Any Crash may damage the LED light is prohibited.
- ※Please make sure the wire is connected to the anode and cathode correctly. The power output should be consistent with the voltage of the strip to avoid damage.
- ※LED lights should be stored in dry, sealed environment. Please only unpack it before usage. Ambient temperature: $-20\text{ }^{\circ}\text{C} \sim +40\text{ }^{\circ}\text{C}$.Storage temperature: $-0\text{ }^{\circ}\text{C} \sim +60\text{ }^{\circ}\text{C}$.Please use the strips without waterproof within indoor environment with humidity less than 70%.
- ※Please be careful during operation. Do not touch the AC power supply in case of electric shock.
- ※Please leave at least 20% power for the power supply during using to ensure there is enough power supply to drive the product.
- ※Do not use any acid or alkaline adhesives to fix the product (e.g.: glass cement).

